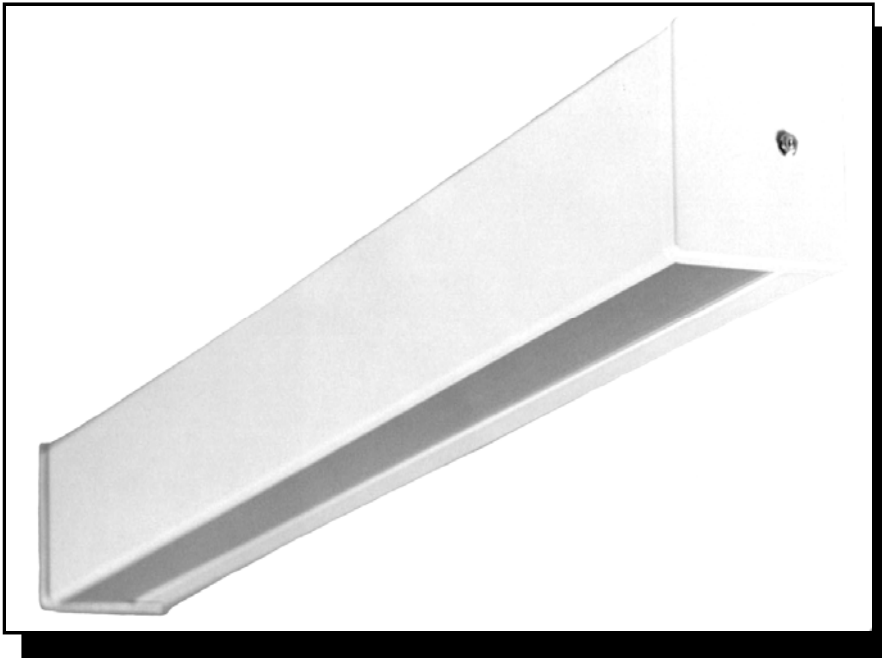


# 16

JOB NAME:

FIXTURE TYPE:



## **ENCLOSED SOLID FRONT WALL BRACKET/HOSPITAL BED LIGHT**

### **FEATURES**

- Available in 2', 3', and 4' lengths in 1, 2, 3, and 4 lamp configurations, T5, and T8.
- Versatile units can be used as vanity wall bracket. With lamp divider and switching can be used as a hospital bed light.
- For full complement of options to fill any wall mount requirement, see **Options**.
- Directs light up and down, thereby eliminating glare. Optional top baffle for downlighting only.
- Optional tamperproof end for added security.
- Optional switching -single circuit, double circuit and 4 way switching.
- Optional convenience outlet.
- Optional nite-lite with or without switch.

### **SPECIFICATIONS**

- **HOUSING**  
Die formed heavy gauge steel. End plates heavy gauge steel.
- **ELECTRICAL**  
Electronic instant start HPF ballasts comply with Federal Energy Efficiency standards.
- **SHIELDING**  
Clear acrylic with linear prisms top and bottom. Optional smooth opal (1 and 2 light only).
- **FINISH**  
White finish is standard. Optional in walnut and oak.
- **CERTIFICATION**  
All units bear UL and Made in U.S.A. label.



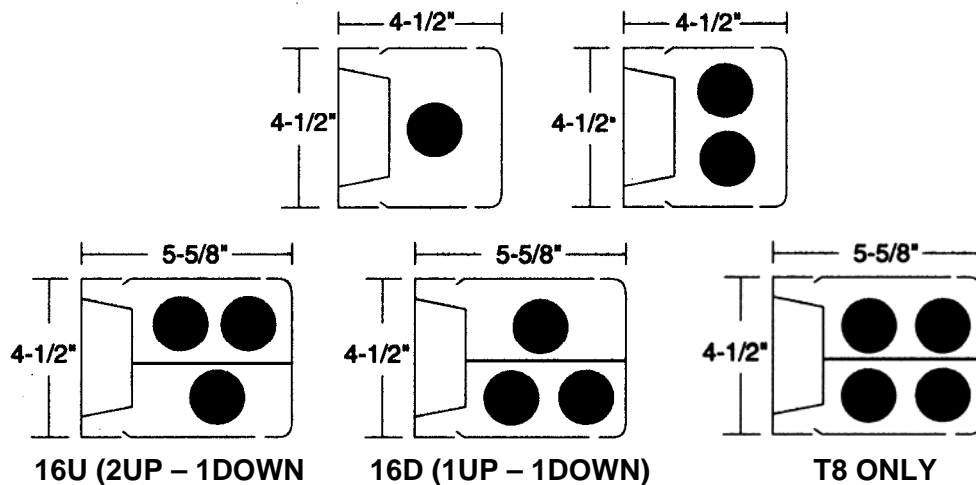
# Enclosed Solid Front Wall Bracket/Hospital Bed Light

## Ordering Matrix

CATALOG NUMBER T8	LAMPS	LENGTH	CATALOG NUMBER T5	LAMPS	LENGTH
16-117	1-F17T8	24-1/2"	16-114T5	1-F14T5	24-1/2"
16-217	2-F17T8	24-1/2"	16-214T5	2-F14T5	24-1/2"
16-125	1-F25T8	36-1/2"	16-121	1-F21T5	36-1/2"
16-225	2-F25T8	36-1/2"	16-221	2-F21T5	36-1/2"
16-132	1-F32T8	48-1/2"	16-128	1-F28T5	48-1/2"
16-232	2-F32T8	48-1/2"	16-228	2-F28T5	48-1/2"
16D-325	3-F25T8	36-1/2"	16D-321T5	3-F21T5	36-1/2"
16U-325	3-F25T8	36-1/2"	16U-321T5	3-F21T5	36-1/2"
16D-332	3-F32T8	48-1/2"	16D-328T5	3-F28T5	48-1/2"
16U-332	3-F32T8	48-1/2"	16U-328T5	3-F28T5	48-1/2"
16-432	4-F32T8	48-1/2"			

### Options:

- Walnut Finish – suffix WAL
- Oak Finish – suffix OAK
- Single Circuit Pull Chain – suffix SW
- Two Circuit Units (downlighting on SW – upright remotely switched) – suffix SW-1
- 4 Way Switch (up-down-both-off) – suffix SW-4
- Nite-Light – suffix NL
- Nite-Light with Pin Switch – suffix NLS
- Convenience Outlet – suffix CO
- Tamperproof Ends – suffix TP
- Opal Smooth Lens (1 and 2 light only) – suffix OPAL
- Dimming ballast(s) – suffix DIM
- Integral low voltage control module – suffix I/O



*For critical application verify all dimensions with factory.  
For additional Lamp/Ballast options, consult factory.*