



# W9

JOB NAME:

FIXTURE TYPE:

## ***DESIGNER WALL BRACKET (Shown with Optional Oak Fascia)***

### **FEATURES**

- Available in 2', 3', and 4' lengths, in 1 and 2 lamp configurations, T8, T12 and BIAx.
- Attractive luminaire is ideal for installation in most commercial, residential, and institutional areas where direct and indirect lighting is preferred.
- Contemporary style unit allows for total flexibility for matching or enhancing any décor with designer created fascias (supplied by others). Optional factory supplied oak or walnut wood or metal painted fascias are available.
- Steel brackets that are provided fasten to back of baffle and clip onto end plates.
- For individual or continuous row mounting.
- Optional convenience outlet and switch for over bed or utility applications.

### **SPECIFICATIONS**

- **HOUSING**  
Die formed heavy gauge steel housing and end plates for extra strength and rigidity.
- **ELECTRICAL**  
Energy saving and electronic class P, HPF ballasts comply with Federal Energy Efficiency standards.
- **FINISH**  
All parts finished with high gloss baked white enamel with minimum 89% reflectance applied over iron phosphate pretreatment for maximum adhesion and rust resistance.
- **CERTIFICATION**  
All units bear UL and Made in U.S.A. labels.



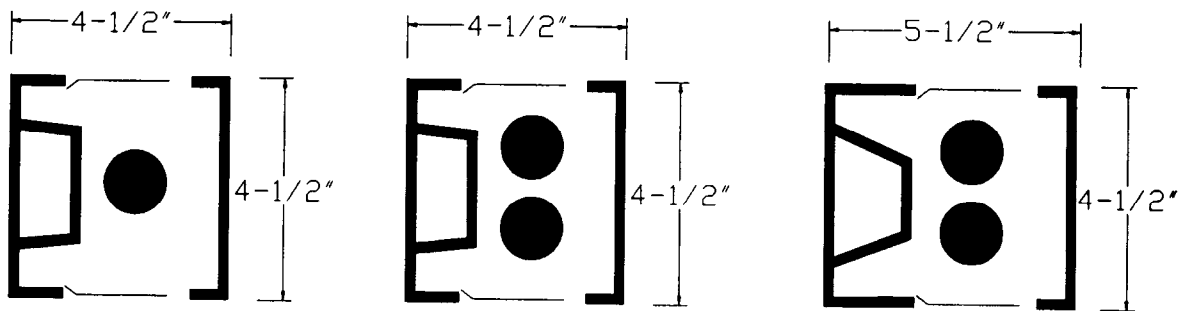
# Designer Wall Bracket

## Ordering Matrix

MODEL	LENGTH	LAMPS	BALLAST	VOLTAGE	OPTIONS
<b>W9</b>	24"	1	T8/EB	120	OAK
	36"	2	T5/EB	277	WAL
	48"		T5HO/EB	UNV*	WHT
			T12HO/MAG		CO
			T12VHO/MAG		SW
			T8HO/EB		

\*Where Available

**OAK:** Natural Oak Fascia  
**WAL:** Walnut Fascia  
**WHT:** White Metal Fascia  
**CO:** Convenience Outlet  
**SW:** Pull Chain



*For critical application verify all dimensions with factory.  
 For additional Lamp/Ballast options, consult factory.*