



SX2C

JOB NAME:

FIXTURE TYPE:

SILVER REFLECTORIZED SLIM LINE / RAPID START CHANNEL

FEATURES

- Available in 2', 3', 4', 6', 8', and 16' lengths, in 1, 2, and 3 lamp configurations.
- Combination snap in end plates double as couplers, eliminate the need for extra hardware in continuous row applications.
- Snap on cover makes installation quick and easy.
- For surface, pendant, or chain mounting, individual or continuous rows.
- Symmetric, asymmetric, and wall wash reflectors available.
- For full complement of Accessories to enhance ease of installation refer to **Options**.

SPECIFICATIONS

- **HOUSING**
Die formed heavy gauge steel with knockouts for stems or chain hangers.
- **ELECTRICAL**
Energy saving and electronic class P, HPF ballasts comply with Federal Energy Efficiency standards.
- **REFLECTOR**
Silver reflector is UV inhibited and 95% reflective, making the product superior in retrofit projects by allowing lamping to be decreased while maintaining light levels. Front reflecting structure is protected with a non-yellowing acrylic coating, and the reflective film is then formed according to a custom optical design by computer controlled equipment to insure precision fabrication.
- **FINISH**
All metal parts pre-painted with high gloss baked white enamel with minimum 89% reflectance applied over iron phosphate pretreatment for maximum adhesion and rust resistance.
- **CERTIFICATION**
All units bear UL and Made in U.S.A. label. Damp location label optional.



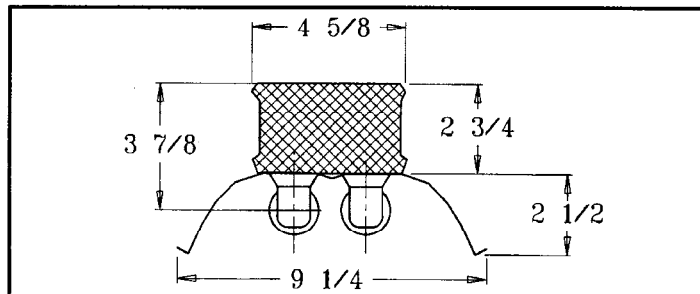
Silver Reflectorized Slim Line Rapid Start Channel

Ordering Matrix

MODEL	LAMPS	LENGTH	LAMP/BALLAST	OPTIONS
SX2C	1	24"	T5	DL
	2	36"	T5HO	AR
	3	48"	T8	LS
		96"		SR
		192"		EM DM

DL: Damp Location
AR: Asymmetric Reflector
LS: Light Shield
SR: Symmetric Reflector
EM: Emergency
DM: Dimming

Dimensions



*For critical application verify all dimensions with factory.
 For additional Lamp/Ballast options, consult factory.*