

# SS

JOB NAME:

FIXTURE TYPE:



## **SIDE SOCKET FLUORESCENT CHANNEL**

### **FEATURES**

- Available 18", 24", 36", 48" and 96" tandem lengths, in 1 and 2 lamp configurations, T8, T5 and T5HO.
- Ultra thin design for cove, coffer, and under counter applications.
- Snap on cover makes installation quick and easy.
- Knockouts on channel ends allow for through wiring or end feed.
- For individual or continuous row mounting.

### **SPECIFICATIONS**

- **HOUSING**  
Die formed heavy gauge steel housing.
- **ELECTRICAL**  
Energy saving and electronic class P, HPF ballasts comply with Federal Energy Efficiency standards.
- **FINISH**  
All metal parts pre-painted with high gloss baked white enamel with minimum 89% reflectance applied over iron phosphate pretreatment for maximum adhesion and rust resistance.
- **CERTIFICATION**  
All units bear UL and Made in U.S.A labels. Damp location label optional.



# SS Series

## Ordering Matrix

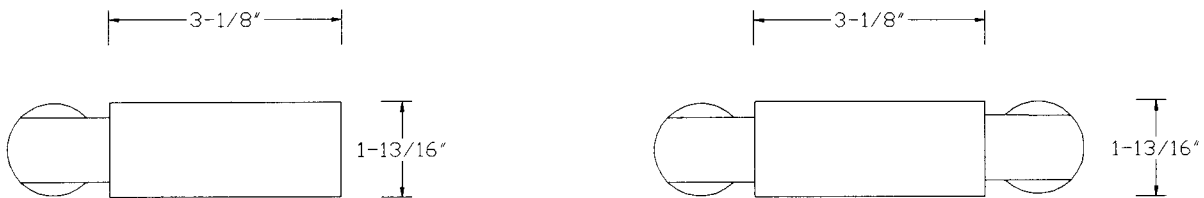
MODEL	LAMPS	LENGTH	BALLAST	VOLTAGE	OPTIONS
SS	1	18"	T8/EB	120	NYC
	2	24"	T5/EB	277	SS95
		36"	T5HO/EB	UNV	SA95
		48"			SR
		72"			AR
		96"			EM

**T8/EB:** Elect. Ballast  
**T5/EB:** Elect. Ballast  
**T5HO/EB:** Elect. Ballast

**NYC:** 20 Gauge NYC housing  
**SS95:** Specular Silver Reflector  
**SA95:** Specular Aluminum Reflector  
**SR:** Symmetric Reflector  
**AR:** Asymmetric Reflector  
**HO:** High Output Lamping  
**EM:** Emergency Battery Back Up

**Example:** If you wanted to specify an SS fixture with 2 lamps, 96' in length with T8 electronic ballast, your model number would read as follows:

**SS-2-96-T8/EB**



*\*Low Power Factor is for residential use only. For critical application verify all dimensions with factory. For additional Lamp/Ballast options, consult factory. Consult factory for available reflectors.*