



S

JOB NAME:

FIXTURE TYPE:

SINGLE LAMP FLUORESCENT CHANNEL

FEATURES

- Available in 15", 18", 24", 36", 48", 72" and 96" lengths in 1 lamp configurations, T5, T5HO, and T8.
- Combination snap in end plates double as couplers, eliminate the need for extra hardware in continuous row applications.
- Snap on cover makes installation quick and easy
- Suitable for low density ceiling applications.
- Symmetric, asymmetric, and light shield reflectors available.
- For surface or pendant mounting, individual or continuous row mounting.
- Available with energy efficient reflectors in specular silver (95% reflectance) or specular aluminum (85% reflectance).

SPECIFICATIONS

- **HOUSING**
Die formed heavy gauge steel housing with ample knockouts for ease of installation.
- **ELECTRICAL**
Energy saving and electronic class P, HPF ballasts comply with Federal Energy Efficiency standards.
- **FINISH**
All parts finished with high gloss baked white enamel with minimum 89% reflectance applied over iron phosphate pretreatment for maximum adhesion and rust resistance.
- **CERTIFICATION**
All units bear UL and Made in U.S.A. labels. Damp location label is optional.



Single Lamp Fluorescent Channel

Ordering Matrix

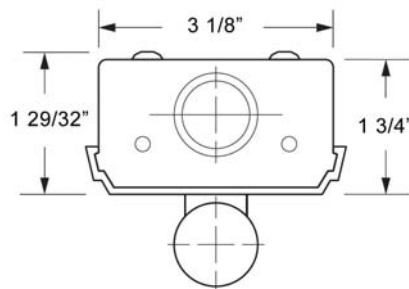
MODEL	LAMPS	LENGTH	BALLAST	VOLTAGE	OPTIONS
S	1	15"	T8/EB	120	SS95
	2	18"	T5/EB	277	SS85
		24"			
		36"			
		48"			
		72"			
		96"			
		96"TD			

T8/EB: Elect. Ballast
T5/EB: Elect. Ballast

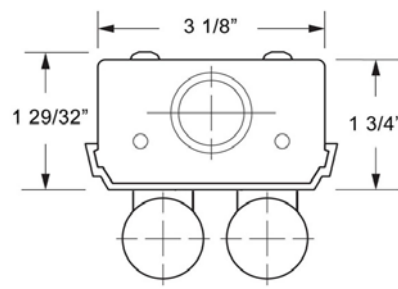
SS95: Specular Silver Reflector
SS85: Specular Aluminum Reflector
DL: Damp Location Label
SR: Symmetric Reflector
AR: Asymmetric Reflector
LS: Wall Wash Light Shield
EM: Emergency Back Up

Example: If you wanted to specify a universal voltage S fixture with 1 32-watt T8 lamp and emergency battery back up, your order number should read as follows:

S-1-48-T8/EB-DUAL-EM



1-LAMP



2-LAMP

*For critical application verify all dimensions with factory.
 For additional Lamp/Ballast options, consult factory.*