

NRE

JOB NAME:

FIXTURE TYPE:



HEAVY DUTY PREMIUM TURRET SOCKET INDUSTRIAL

FEATURES

- Available in 4' and 8' lengths, 2, 3, and 4 lamp configurations, T8 and T5.
- 4' reflectors with full transverse ribs for maximum rigidity are standard in baked white enamel.
- Reflectors have 15% apertures for comfortable uplight. Solid tops and 10% uplight apertures are optional.
- Captive molded fasteners recessed into reflector for flush appearance.
- Snap on end plate can double as a coupler for continuous row installation.
- Suitable for mounting individually or in rows.
- Reflector aligners are supplied with 8' units.
- For full complement of accessories to enhance ease of installation, see **Options**.

SPECIFICATIONS

- **HOUSING**
Die formed heavy gauge steel housing with deeply embossed sides for extra strength.
- **ELECTRICAL**
Energy saving and electronic class P, HPF ballasts comply with Federal Energy Efficiency standards.
- **FINISH**
All metal parts finished with premium grade white enamel with minimum 89% reflectance applied over iron phosphate pretreatment for maximum adhesion and rust resistance.
- **CERTIFICATION**
All units bear UL and Made in U.S.A. labels. Damp location label optional.



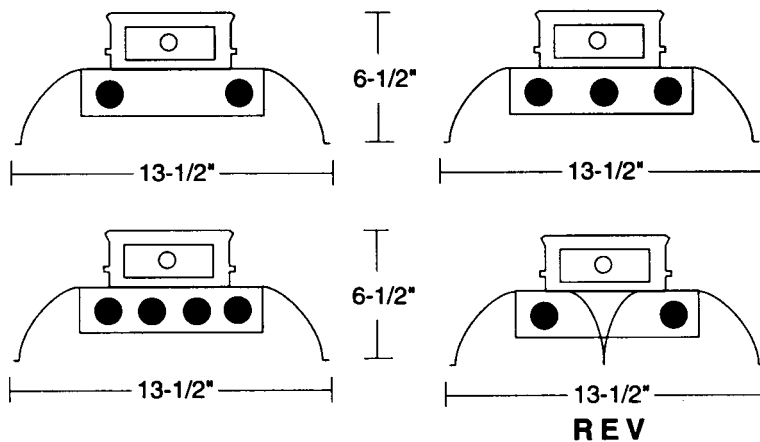
Heavy Duty Industrial

Ordering Matrix

MODEL	LAMPS	LENGTH	BALLAST	VOLTAGE	OPTIONS
NRE	2	48"	T8/EB	120	REV
	3	96"	T5/EB	277	SOLID
	4		T12/EB	UNV	DL
	6				EM
	8				WG

T8/EB: Elect. Ballast
T5/EB: Elect. Ballast
T12/EB: Elect. Ballast

REV: Snap in V Shield (2 lamp only)
SOLID: Solid Top Reflector
DL: Damp Location Label
EM: Emergency Backup
WG: Wire Guard



*For critical application verify all dimensions with factory.
 For additional Lamp/Ballast options, consult factory.*