

C9

JOB NAME:

FIXTURE TYPE:



HEAVY DUTY SINGLE AND TWO LAMP CHANNEL

FEATURES

- Available in 4', 6', 8', and 16' lengths, in 1 and 2 lamp configurations, T8, T12, T5, and T5-HO.
- Heavy-duty channel with deeply embossed sides for added rigidity and easy slide grip hanging.
- Combination snap in end plates double as couplers, eliminate the need for extra hardware in continuous row applications.
- Heavy-duty spring-loaded plunger type lamp holders for HO & VHO only.
- Snap on cover makes installation quick and easy
- For surface, pendant, or chain mounting, individual or continuous rows.
- Symmetric, asymmetric, and wall wash reflectors available.
- Available with energy efficient reflectors in specular silver (95% reflectance) or specular aluminum (85% reflectance).
- For full complement of Accessories to enhance ease of installation refer to **Options**.

SPECIFICATIONS

- **HOUSING**
Die formed heavy gauge steel channel with deeply embossed sides for extra strength. 20 gauge steel available.
- **ELECTRICAL**
Energy saving and electronic class P, HPF ballasts comply with Federal Energy Efficiency standards.
- **FINISH**
All parts pre-painted with high gloss baked white enamel with minimum 89% reflectance applied over iron phosphate pretreatment for maximum adhesion and rust resistance.
- **CERTIFICATION**
All units bear UL and Made in U.S.A. labels. Damp Location label available.



C9 Series

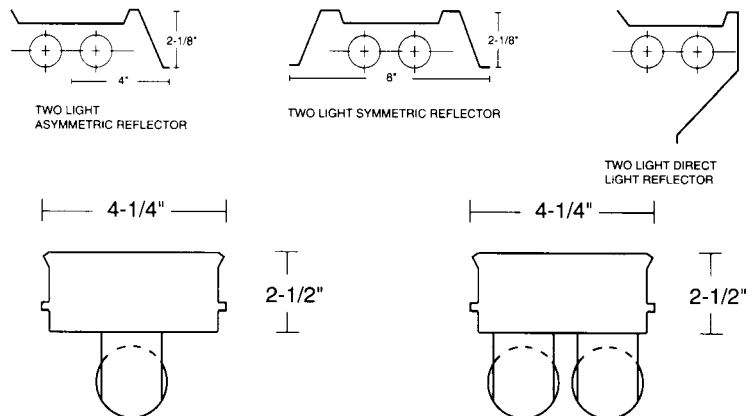
Ordering Matrix

MODEL	LAMPS	LAMP/BALLAST	LENGTH	VOLTAGE	OPTIONS
C9	1	T8/EB	48"	120	SS95
	2	T12/EB	72"	277	SA85
		T12/MB*	96"	UNV*	SR
		T5/EB	192"		AR LS 20G HO VHO EM

T8/EB: Elec. Ballast
T5/EB: Elec. Ballast
T12/EB: Elec. Ballast
T12/MB: Magnetic Ballast

***UNV:** Only where available

SS95: Specular Silver Reflector
SA85: Specular Aluminum Reflector
SR: Symmetric Reflector
AR: Asymmetric Reflector
LS: Wall Wash Direct Light Shield
20G: 20 Gauge Steel Housing
HO: High Output Lamping
VHO: Very High Output Lamping (For T12 Only)
EM: Emergency Battery Backup



For low temperature applications only. For critical application verify all dimensions with factory. For additional Lamp/Ballast options, consult factory.