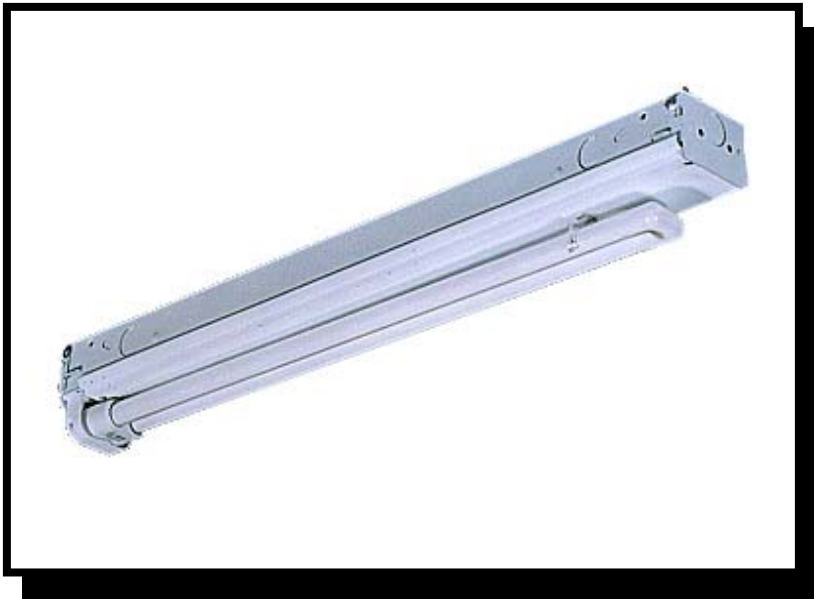


BIAX

JOB NAME:

FIXTURE TYPE:



LONG TWIN TUBE CHANNEL

FEATURES

- Available in 15", 18", 24", and 48" lengths in 1, 2, or 4 BIAx lamp configurations.
- Specifically designed for the highly efficient BIAx lamp.
- Provides twice the illumination in half the space.
- Combination snap in end plates double as couplers, eliminate the need for extra hardware in continuous row applications.
- Snap on cover makes installation quick and easy.
- Symmetric, asymmetric, and direct light reflectors available.
- For surface, pendant, or chain mounting, individual or continuous row mounting.
- For full complement of accessories to enhance ease of installation, refer to **Options**.
- Available with energy efficient reflectors in specular silver (95% reflectance) or specular aluminum (85% reflectance).

SPECIFICATIONS

- **HOUSING**
Die formed heavy gauge steel with knockouts for stems or chain hangers.
- **ELECTRICAL**
Energy saving and electronic class P, HPF ballasts comply with Federal Energy Efficiency standards.
- **FINISH**
All parts finished with high gloss baked white enamel with minimum 89% reflectance applied over iron phosphate pretreatment for maximum adhesion and rust resistance.
- **CERTIFICATION**
All units bear UL and Made in U.S.A. labels.



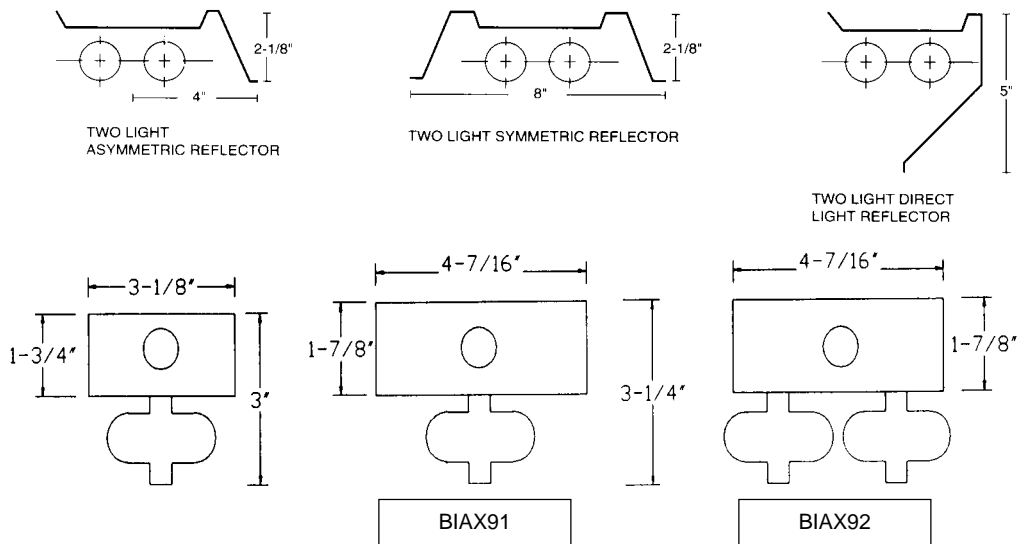
BIAX Series

Ordering Matrix

CATALOG NUMBER	LAMPS	LENGTH	OPTIONS
BIAX-127X	1-BX27	15"	SS95
BIAX92-227X	2-BX27	15"	SA85
BIAX-139X	1-BX39	18"	SR
BIAX92-239X	2-BX39	18"	AR
BIAX-140X	1-BX40	24"	LS
BIAX92-240X	2-BX40	24"	EM
BIAX-150X	1-BX50	24"	
BIAX92-250X	2-BX50	24"	
BIAX-140X-TD	2-BX40	48"	
BIAX92-240X-TD	4-BX40	48"	

For Single Lamp on 2 Lamp (4-7/16") Housing-change BIAAX to BIAAX91

- SS95:** Specular Silver Reflector
- SA85:** Specular Aluminum Reflector
- SR:** Symmetric Reflector
- AR:** Asymmetric Reflector
- LS:** Wall Wash Direct Light Shield
- EM:** Emergency Battery Backup



*For critical application verify all dimensions with factory.
 For additional Lamp/Ballast options, consult factory.*