



SCOOP

JOB NAME:

FIXTURE TYPE:

CURVED LINEAR DIRECT/INDIRECT

FEATURES

- An ultra low-profile linear luminaire suspended direct/indirect luminaire provides attractive glare-free ambient lighting.
- Available for T5 and T5-HO in 2, 3, 4 & 6 lamp configurations in lengths up to 8 foot.
- Optional center baffle provides 30% direct and 70% indirect illumination with even ceiling illumination. Radial extruded acrylic center lens for 20% direct and 80% indirect available.
- Ideal for offices, conference rooms, reception areas, classrooms, video display terminal work areas, or any installation where linear luminaries are preferred.
- Fixtures can be cable or rigid stem mounted.
- Companion wall mount fixture available

SPECIFICATIONS

HOUSING

Housing constructed of durable extruded aluminum.

ELECTRICAL

Energy saving electronic ballasts (<10% THD) are standard. Optional program rapid start and electronic dimming ballasts available.

FINISH

All housings post-painted with a smooth white polyester powder coat. Textured finishes and other colors are available upon request.

CERTIFICATION

All units are UL listed for dry or damp locations. Made in U.S.A.



Curved Linear Direct/Indirect

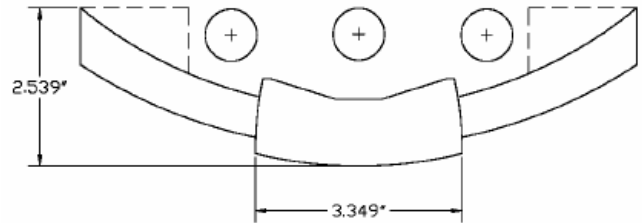
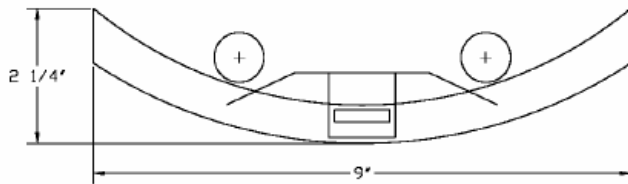
Ordering Matrix

MODEL	LAMPS	BALLAST	LENGTH	VOLTAGE	MOUNTING	OPTIONS
SCOOP	2	T5/EB	48"	120	AC	ACR
	3	T5HO/EB	96"	277	STEM	PBL
	4		XX			WRB
	6			UNV		RS
						DM
						EM
						I/O

T5/EB: T5 Electronic Ballast
T5HO/EB: T5HO Electronic Ballast

AC: Aircraft Cable (Specify Length)
STEM: Stem Mounted (Specify Length)

ACR: Acrylic Center Lens
PBL: Parabolic Louver
WRB: White Radial Baffle
RS: Program Rapid Start
DM: Electronic Dimming Ballasts
EM: Emergency Backup
I/O: I/O Control Module



Shown with optional louver

*Row lengths must be specified. For additional Lamp/Ballast configurations, consult factory.
 Dimensions subject to change. Consult factory for critical applications.*