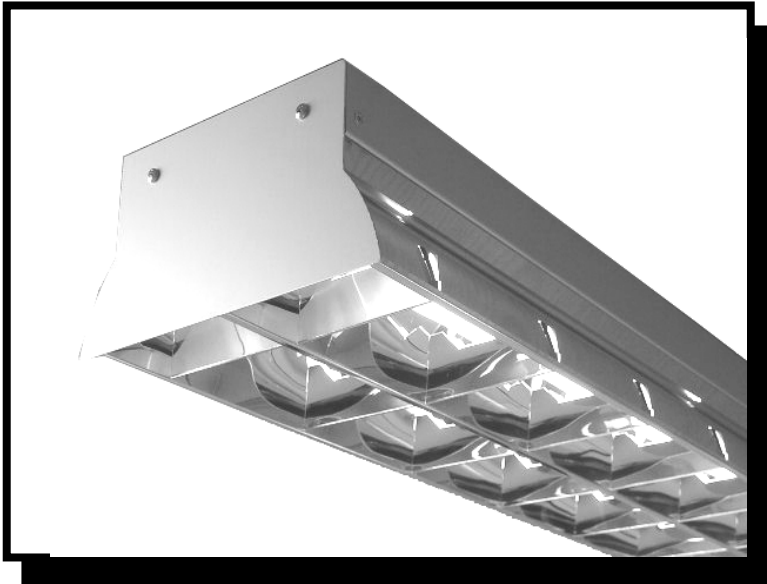


HYD

JOB NAME:

FIXTURE TYPE:



HYD LUMINAIRE

FEATURES

- Available in 48" and 96" lengths.
- Designed specifically for use in retail applications where product representation is crucial. This fixture has light distribution that is also ideal for library stack lighting.
- Pendant, aircraft cable mounting available. Lightweight and intelligent, this fixture has been designed to assure ease of installation.
- Standard finish is brushed aluminum or white with custom colors available as an option.
- Specially designed louver and reflector system provide direct light to product shelving where it is needed most.

SPECIFICATIONS

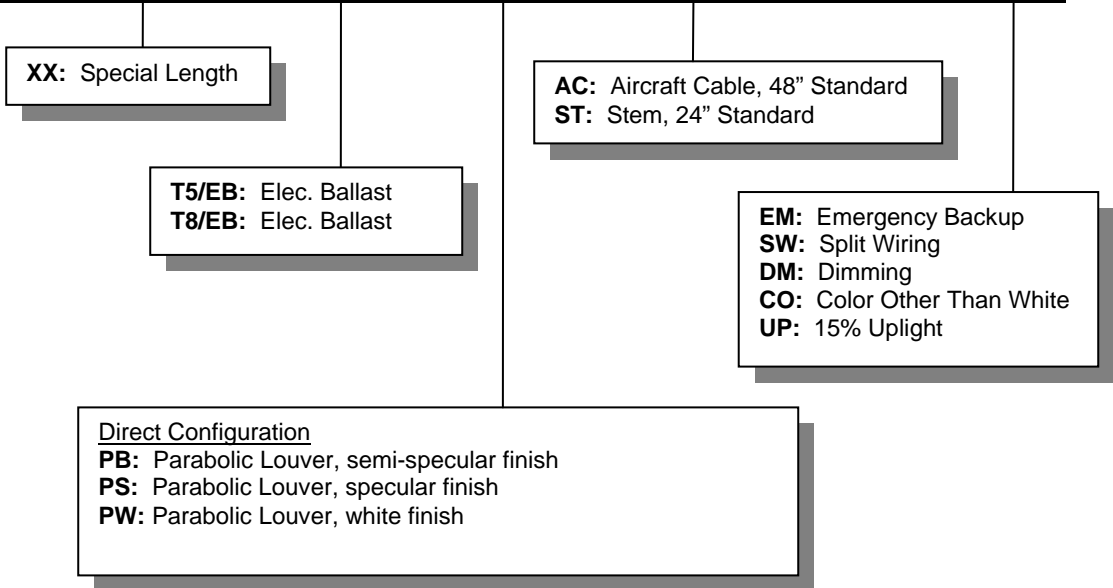
- **HOUSING**
The housing is made of lightweight aluminum for durability, corrosion resistance and modern aesthetics.
- **ELECTRICAL**
Available in 120v-277v. Instant start ballasts are standard. Custom split wiring and/or energy saving electronic dimming available.
- **FINISH**
Exterior of housing comes finished in a brushed aluminum, or white powder coat. Custom colors are available.
- **CERTIFICATION**
All units bear UL and Made in U.S.A. label.



HYD Luminaire

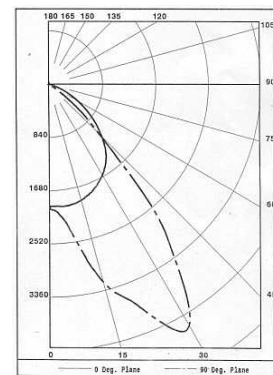
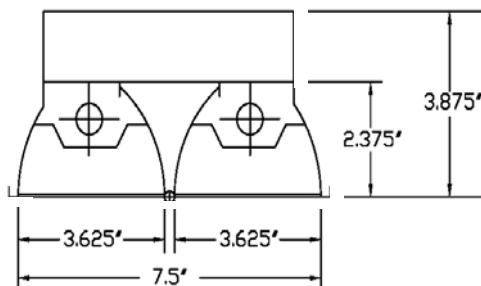
Ordering Matrix

Model	Lamps	Length	Lamp/Ballast	Shielding	Mounting	Voltage	Options
HYD	2	48"	T5/EB	PB	AC	120	EM
	4	96"	T8/EB	PS	ST	277	SW
		XX		PW		UNV	DM
							CO
						UP	



Example: If you wanted to specify an HYD fixture with 2 lamps, 4' – 0" in length, T8 electronic ballast with a semi-specular parabolic louver, mounted on aircraft cable and 120 volt, with emergency backup, the model number would read as follows:

HYD – 2 – 48 – T8/EB – PB – AC – 120 – EM



LAMPS: Two 54 Watt High Output
 High Output T5 Fluorescent
 Lamps at 4400 Lumens each